

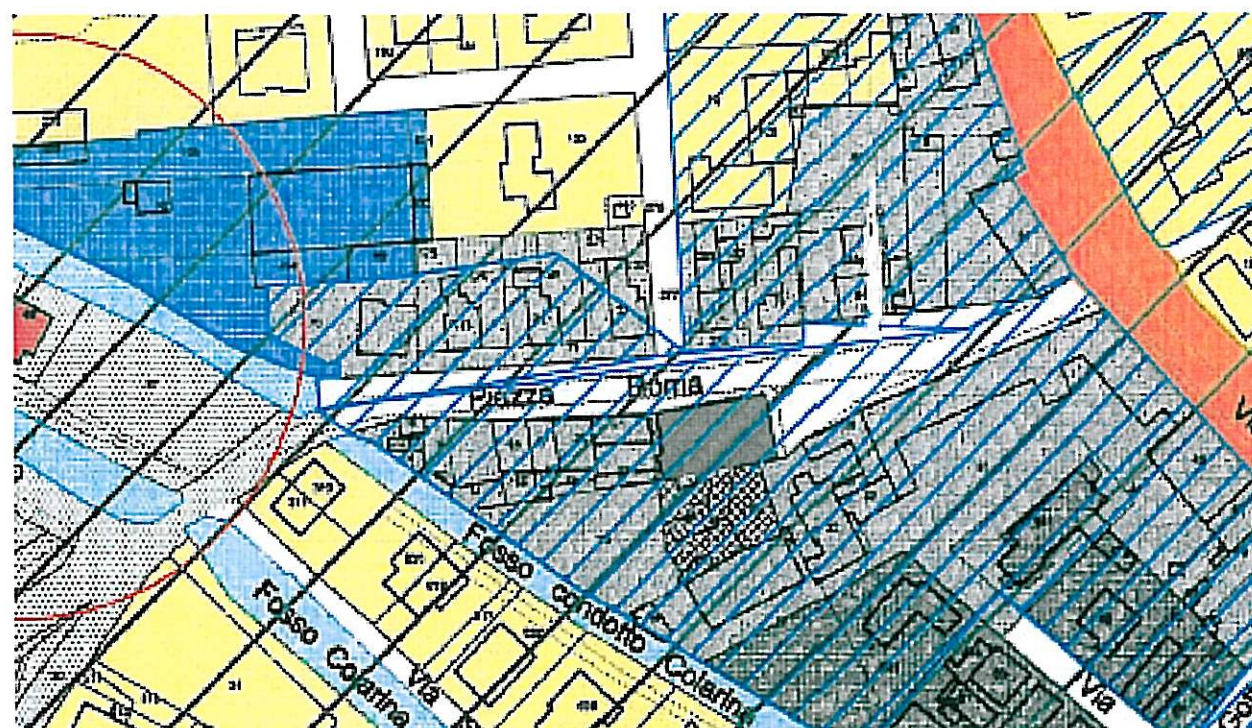
RIQUALIFICAZIONE PIAZZA ROMA A SOAVE

Progetto DEFINITIVO - ESECUTIVO - I Stralcio
Elaborati Grafici

progettista: architetto Rosanna Moffa
collaboratori: geometra Elena Bombana
geometra Paolo Zangelmi

Porto Mantovano 21 dicembre 2013



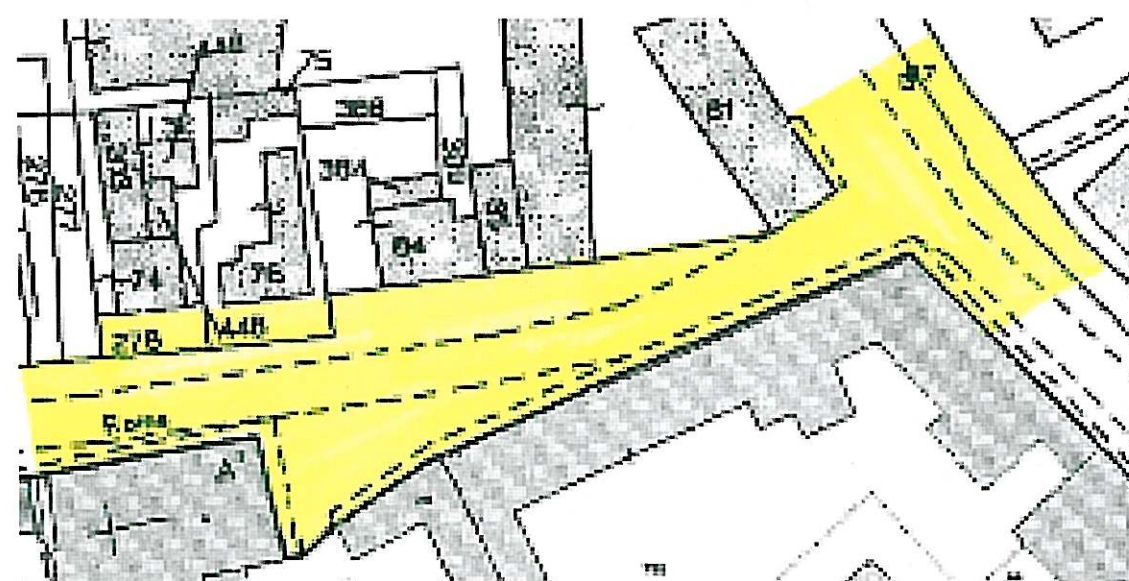


ESTRATTO DI P.G.T. VIGENTE SCALA 1:2000

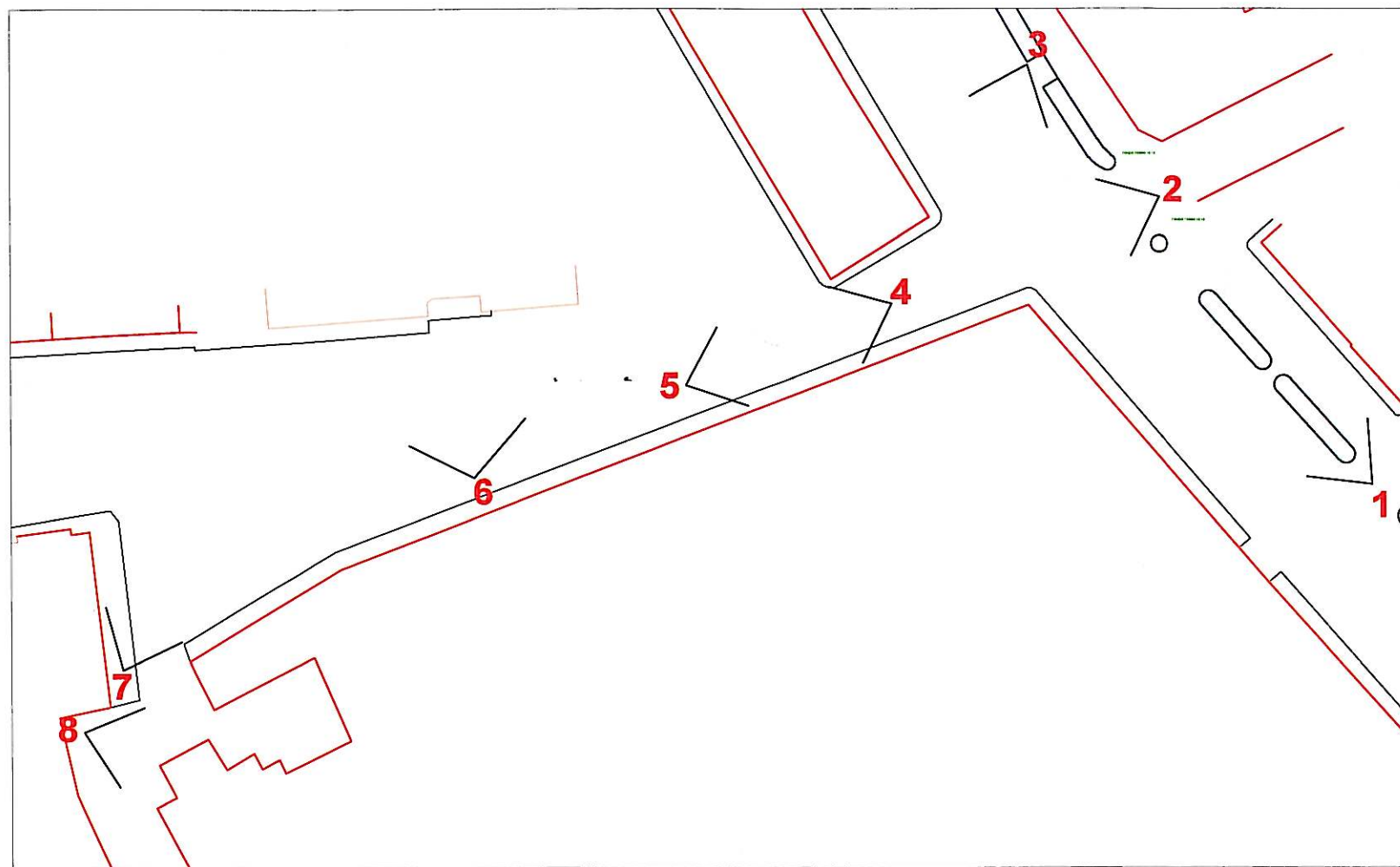


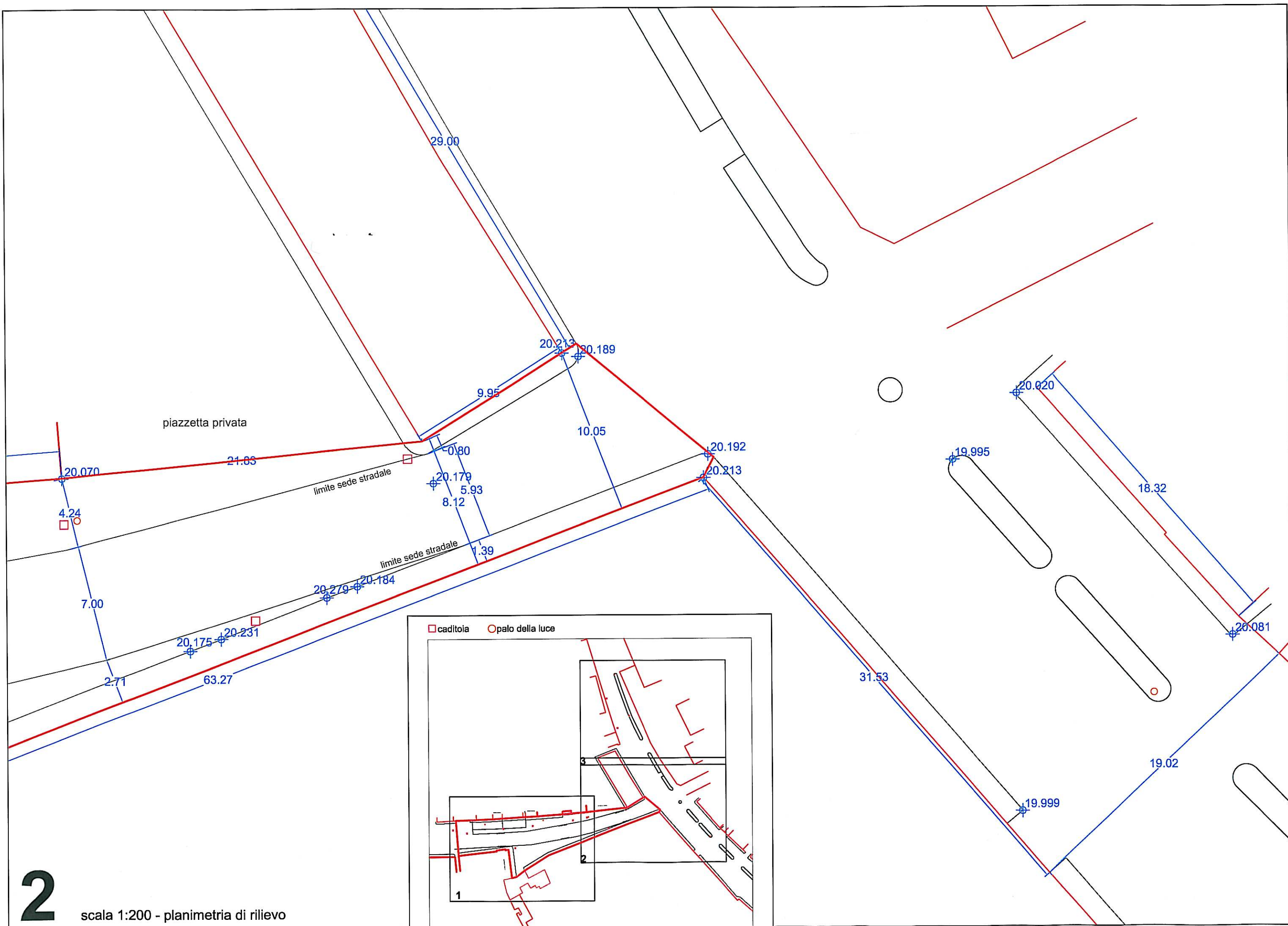
ESTRATTO DI P.T.C. del PARCO DEL MINCIO

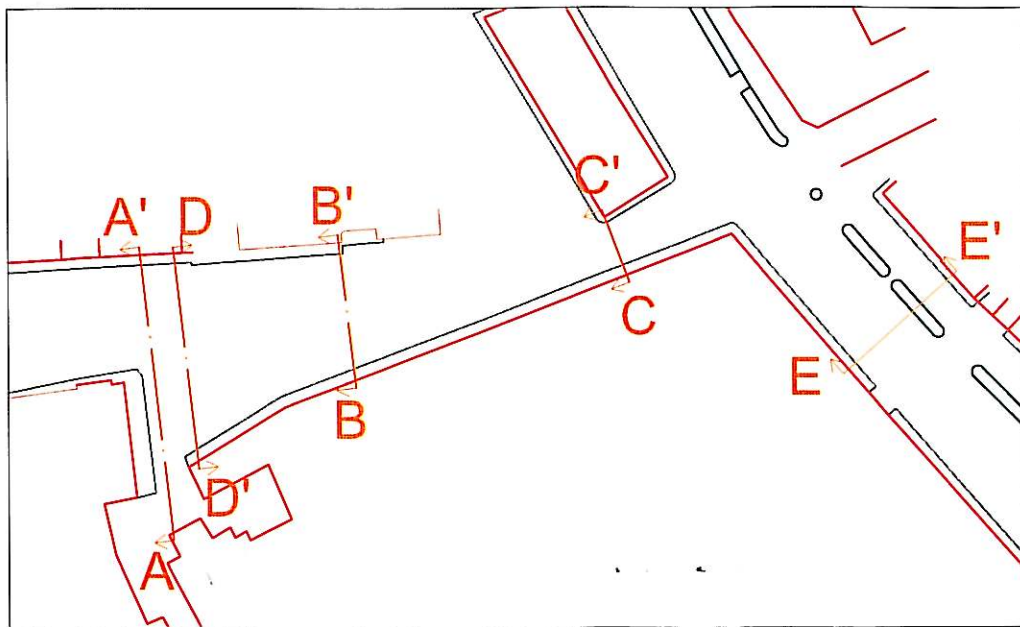
SCALA 1:10.000



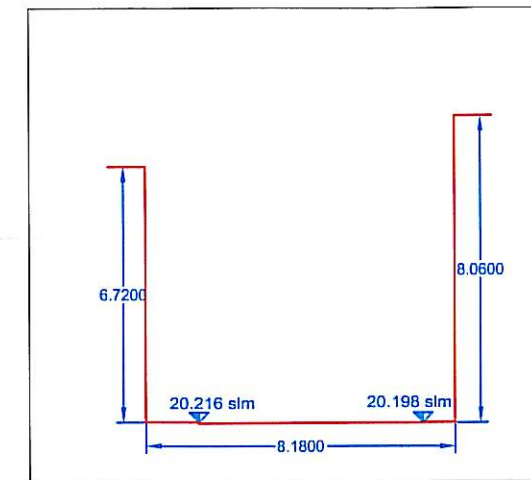
ESTRATTO CATASTALE SCALA 1:1000



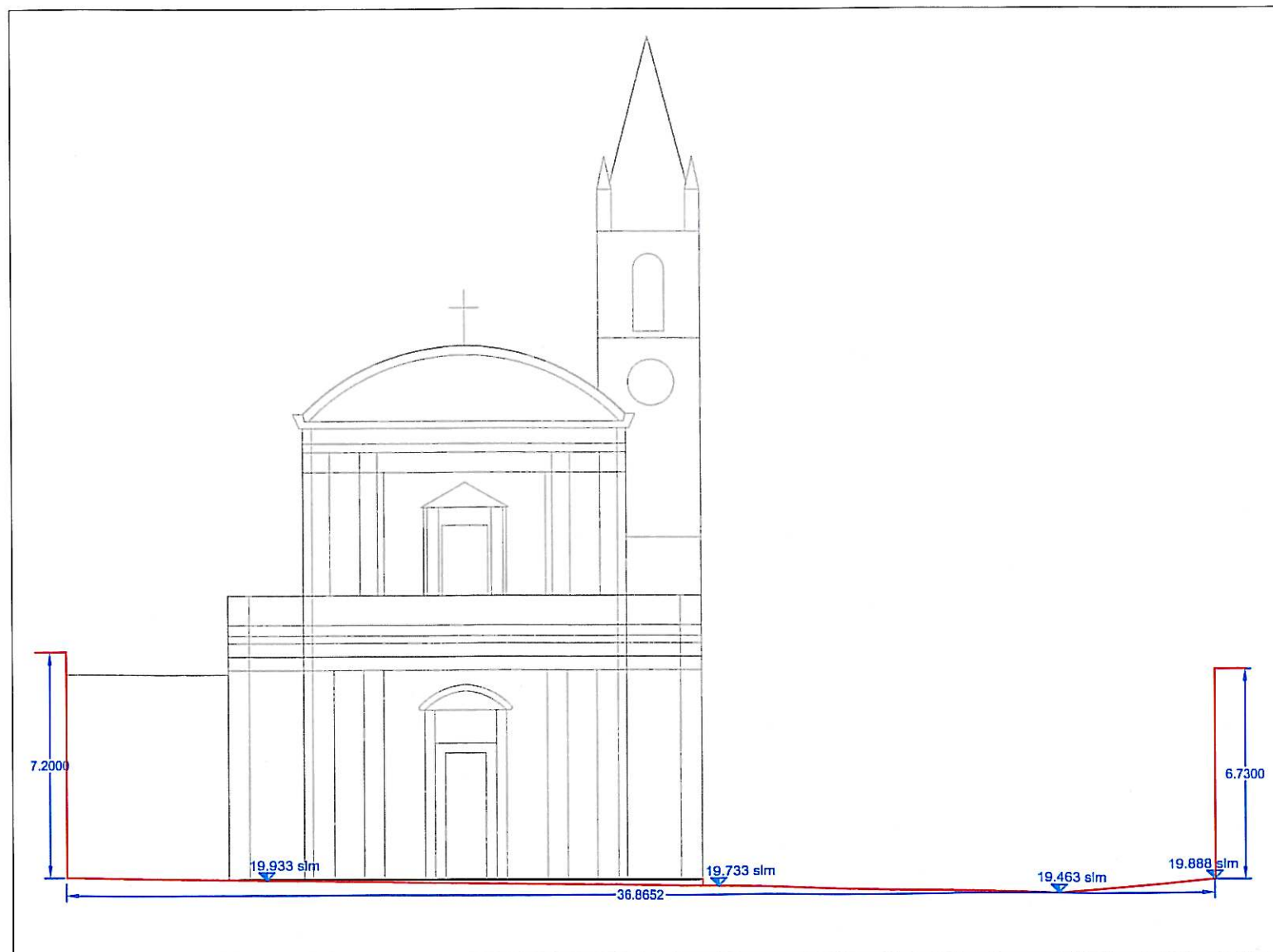




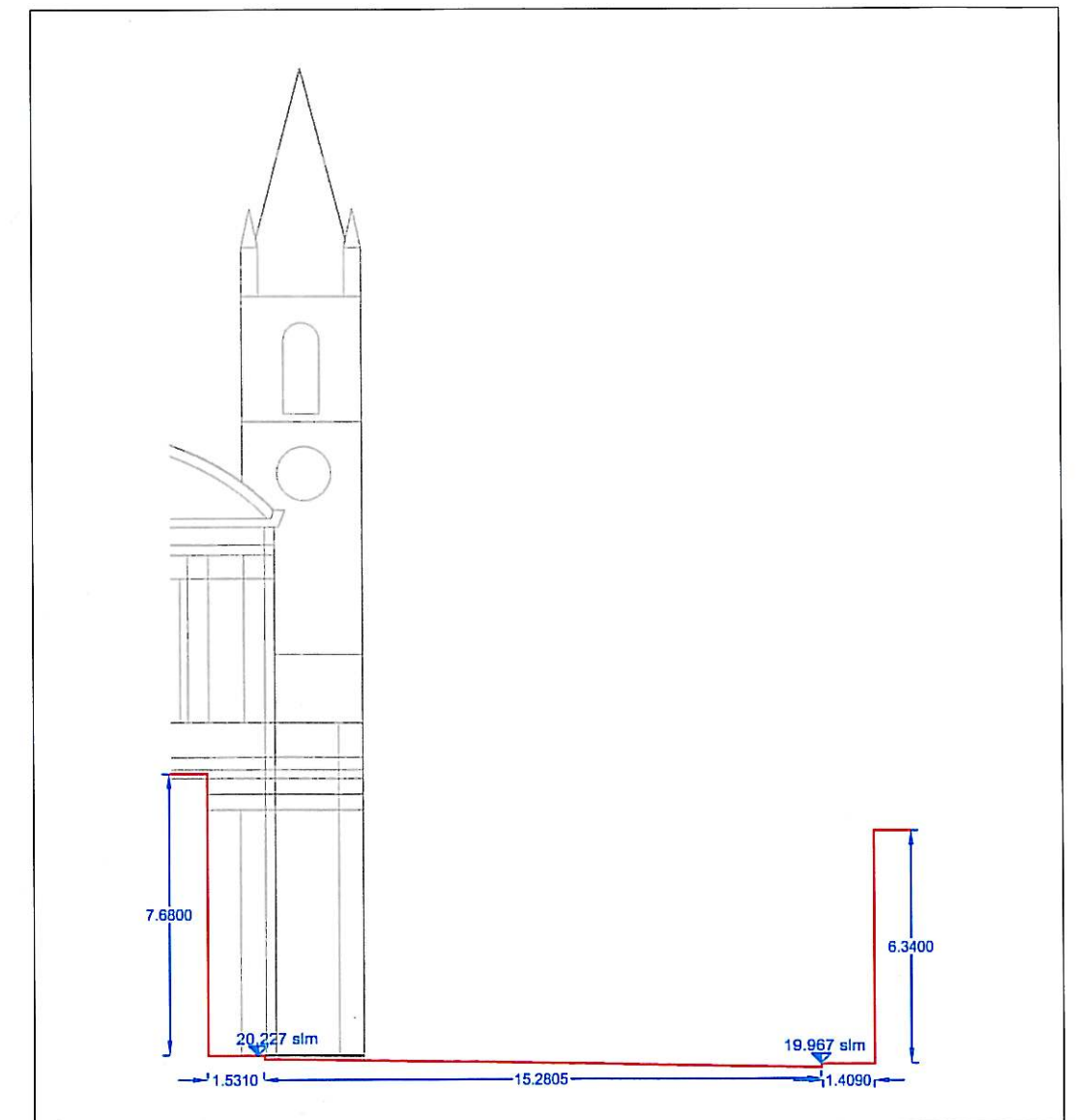
area d'intervento scala 1:1.000



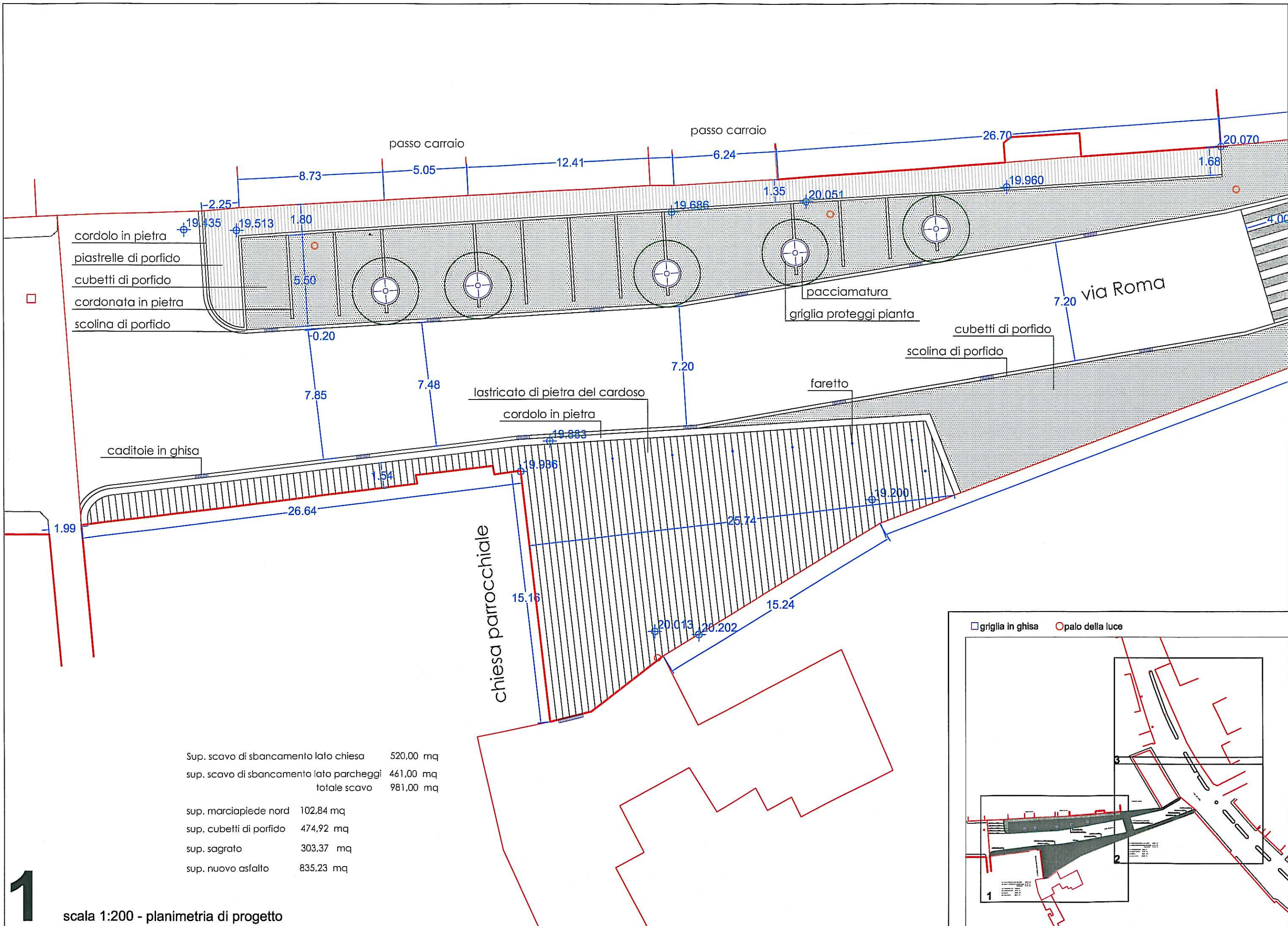
sezione C-C' scala 1:200



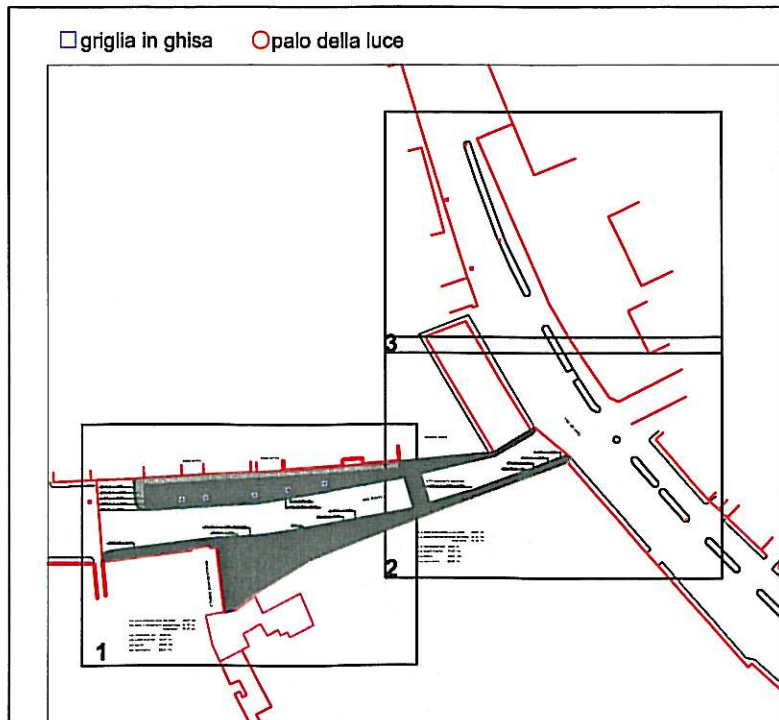
sezione A-A' scala 1:200

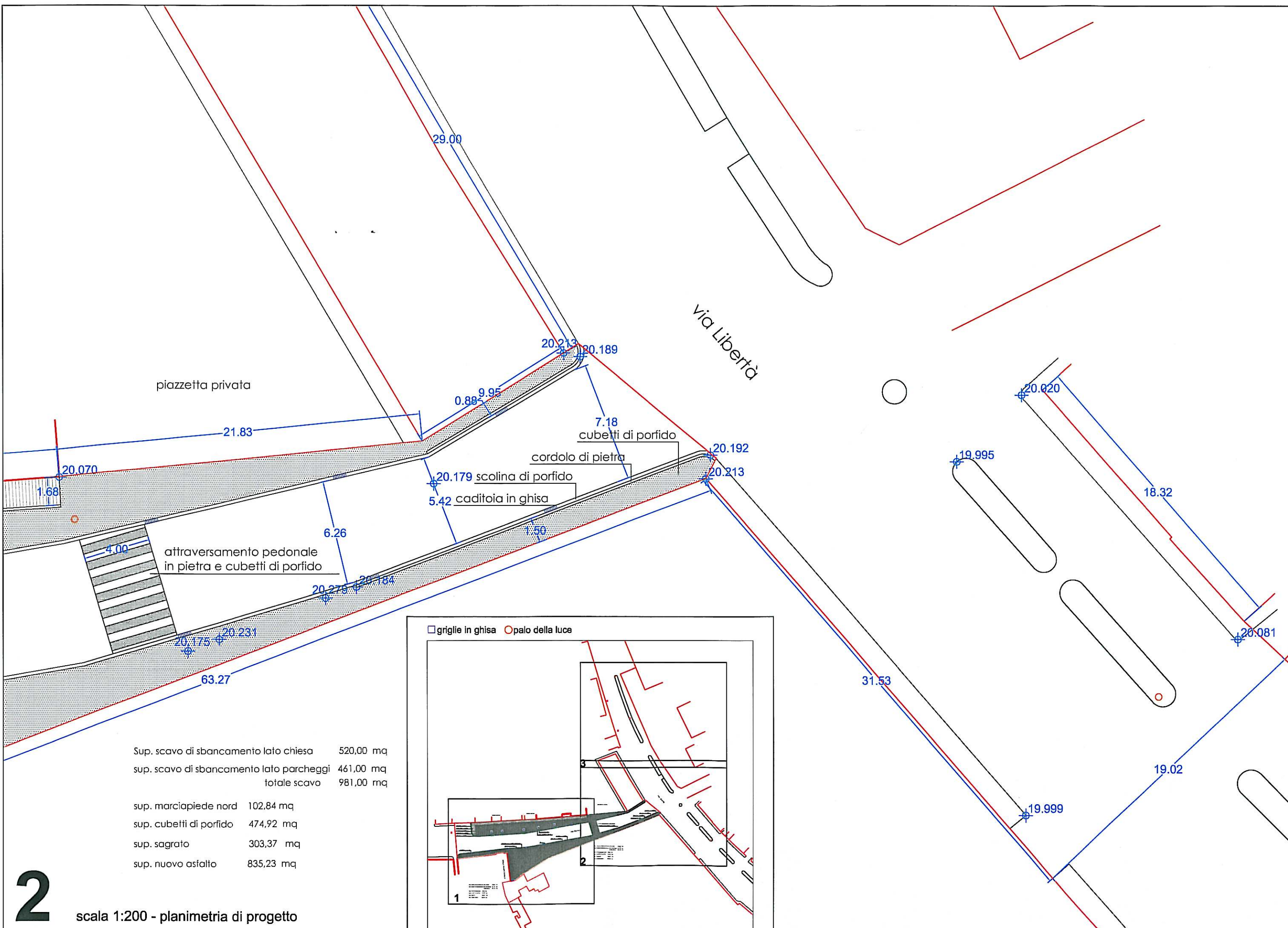


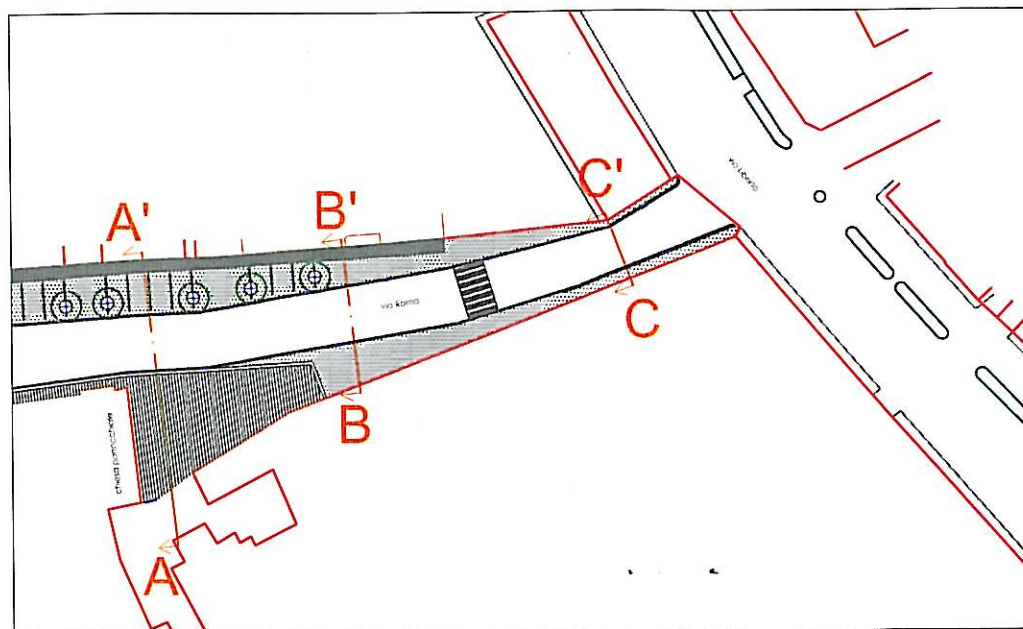
sezione B-B' scala 1:200



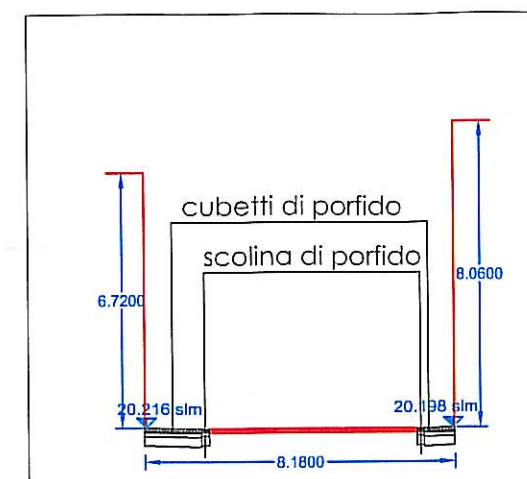
Sup. scavo di sbancamento lato chiesa	520,00 mq
sup. scavo di sbancamento lato parcheggi	461,00 mq
totale scavo	981,00 mq
sup. marciapiede nord	102,84 mq
sup. cubetti di porfido	474,92 mq
sup. sagrato	303,37 mq
sup. nuovo asfalto	835,23 mq



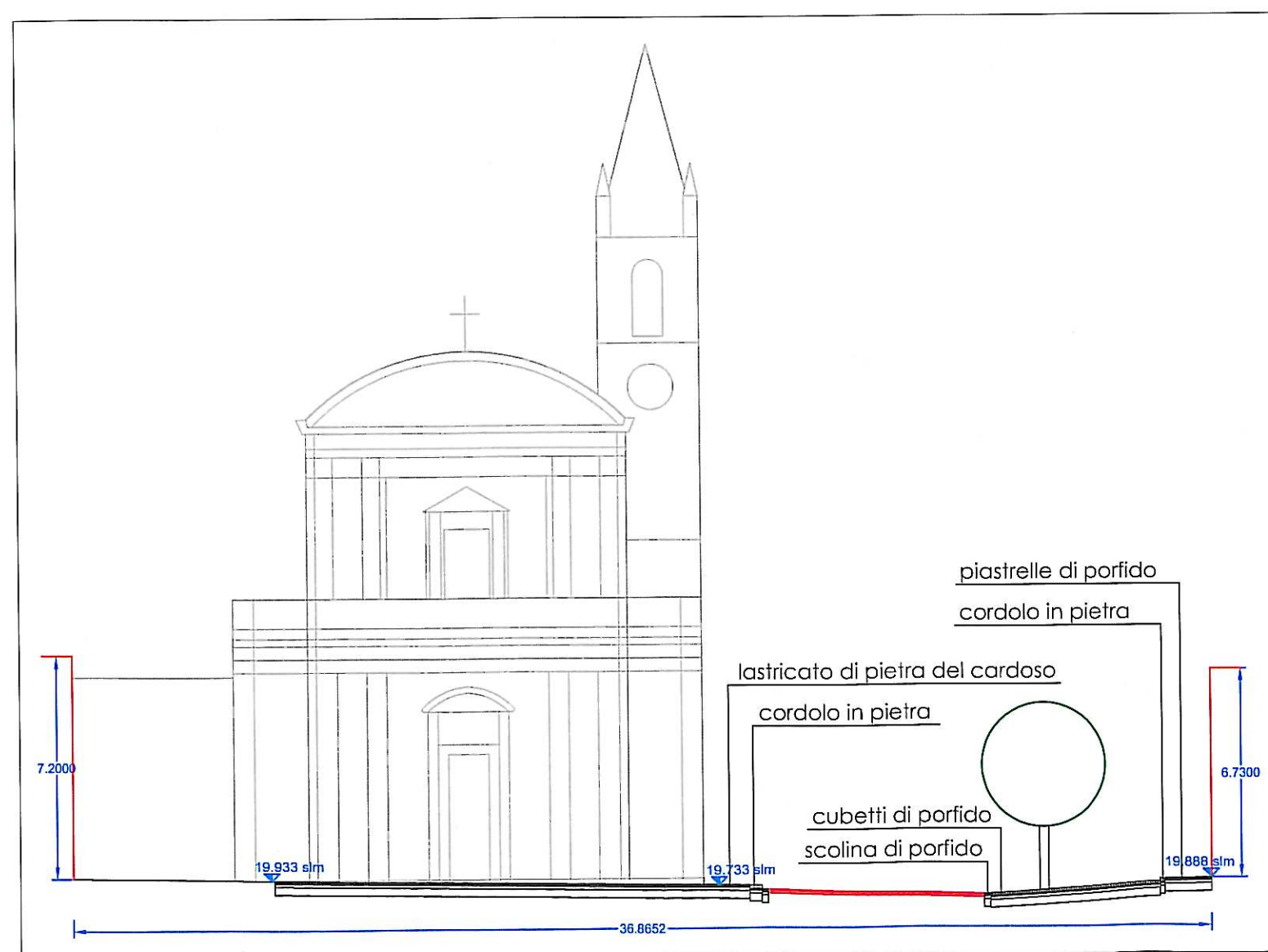




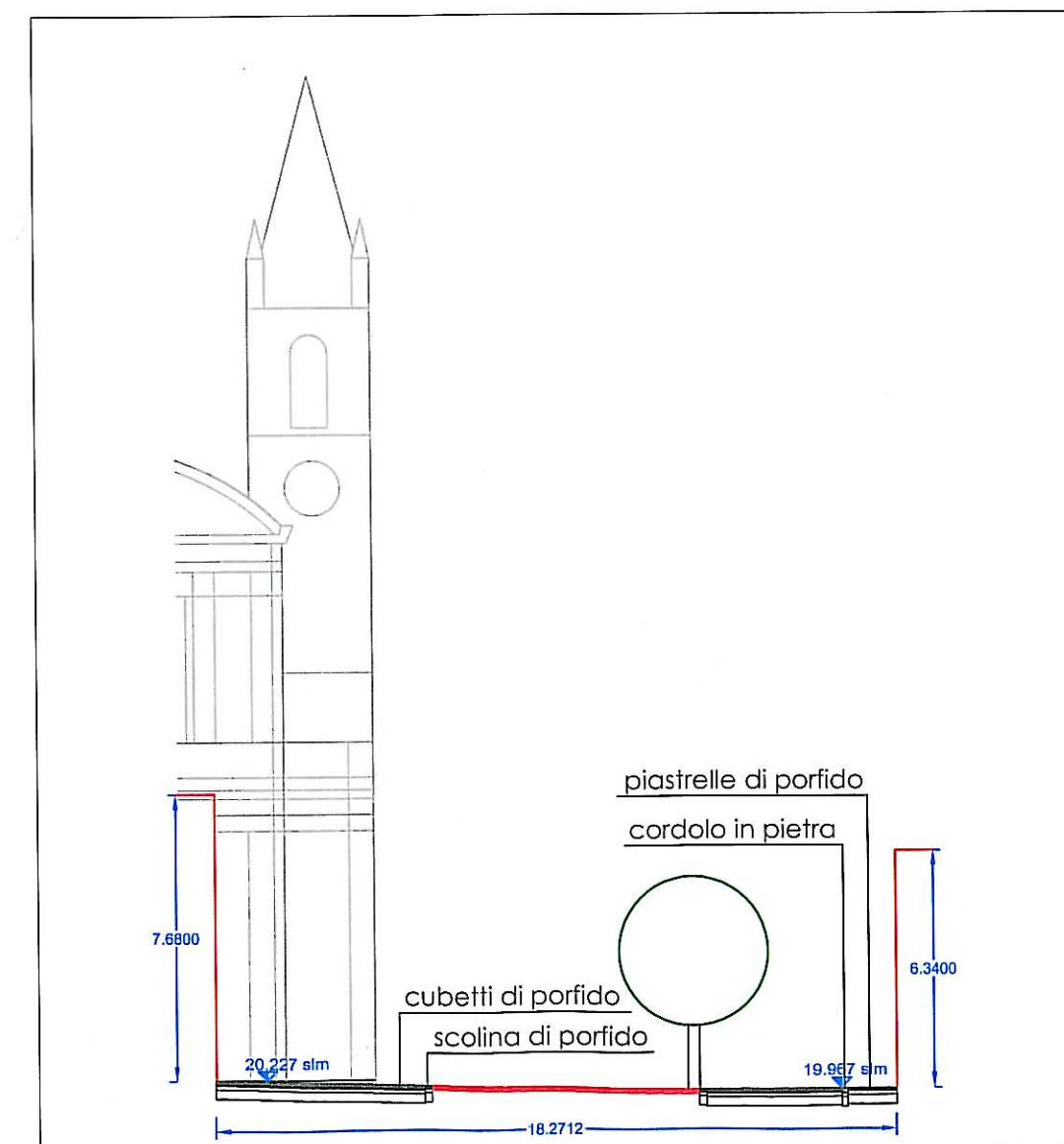
area d'intervento scala 1:1.000



sezione C-C' scala 1:200



sezione A-A' scala 1:200



sezione B-B' scala 1:200